

TECHNICAL INFORMATIONS

ASH 45°

6W 3000K CINZENTO

Design moderno, chips LED de elevada reprodução, alumínio de fundição injetada, elevados níveis de proteção (IP e IK), forte resistência à corrosão.

Modern design, high-performance LED chips, injected cast aluminum, high protection levels (IP and IK), strong corrosion resistance.

Diseño moderno, chips LED de alto rendimiento, aluminio fundido inyectado, altos niveles de protección (IP e IK), fuerte resistencia a la corrosión.



ILAR-00808

REFERENCE

Reference	ILAR-00808
LED Brand	LED CREE
Body Material	Aluminum
Housing Colour	Dark Grey
Nominal Lifetime (EOL end of life)	15000h
Surface / Recessed	Surface
Dimmable	NO
Installation	Ceiling

DIMENSION & WEIGHT

Lenght	100mm
Width	100mm
Height	100mm
Packaging Unit	Carton Box 12 pcs
Gross Weight	11.7 kg
Volume	27 dm ³

PHOTOMETRICAL DATA

Total Luminous Flux	410lm
Luminous Efficacy	70lm/W
Beam Angle	45°
Colour Temperature	3000K
Colour Rendering Index	>80

ELECTRICAL AND OPERATING DATA

Nominal Wattage	6W
Nominal Voltage	220-240V
Operating Frequency	50/60Hz
Operating Temperature	- 20° C to + 50° C
Starting Time 100% ON	0.000s
ON/OFF Cycles	>15000

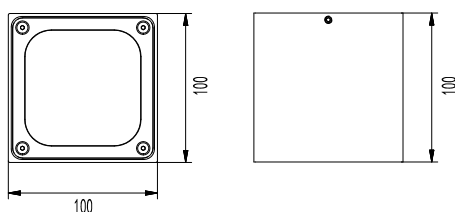
ENERGY LABEL & STANDARS

Energy Label	A
Energy Consumption KWH/1000H	6 kWh
Type of Protection	IP54
Protection Class	Class I
Protection Class IK (shock resistance)	IK10

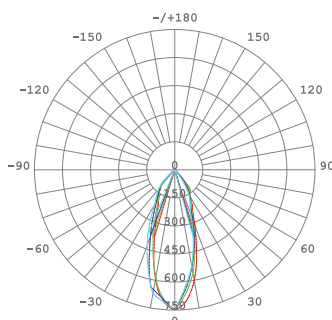
CERTIFICATIONS

2014/30/EU (EMC Directive)	YES
2014/35/EU (LVD Directive)	YES
ROHS	YES
ENEC	NO
Warranty	3 YEARS

SIZE



BEAM ANGLE



Designed by Aron Light in Portugal. Made in PRC

